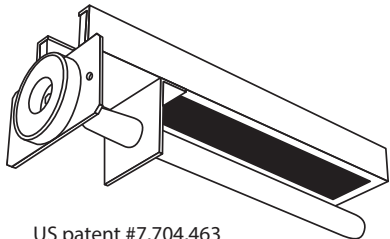




MAGNET MOUNT AIR PURIFIER INSTALLATION GUIDE

Warrior is installed in the central air system to reduce odors and airborne biological contaminants for improved indoor air quality. Warrior also reduces microbial growth within the air system.



US patent #7,704,463



WARNING
PROTECT EYES FROM UV LIGHT
TURN OFF UNIT OR DISCONNECT
BEFORE SERVICING



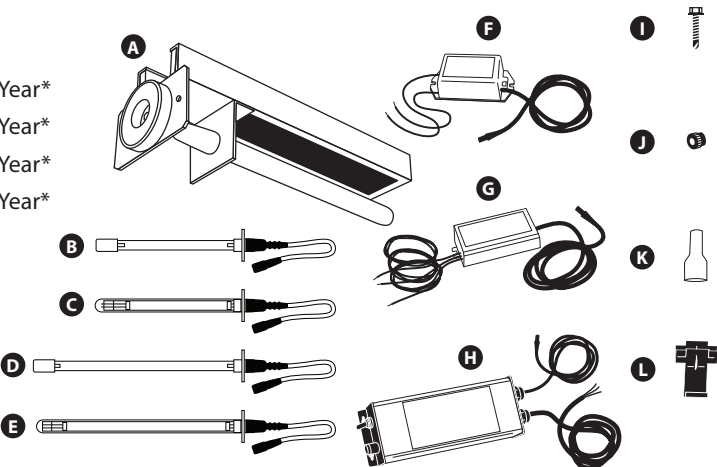
IMPORTANT!

- Only qualified technicians should install this product
- Install in accordance with relevant building codes
- Read instructions carefully including safety warnings

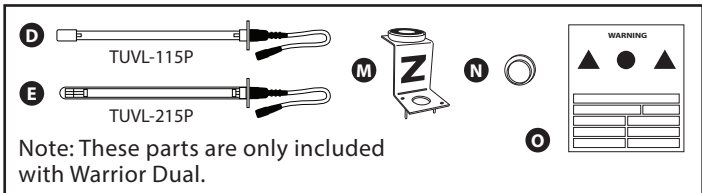
*Installation of this product by anyone other than licensed HVAC or electrical contractors voids warranty.
© 2018 Warrior IAQ WRA-MAG-MAN 4.26.18

1 Parts List

- A** Warrior Unit
- B** Warrior 11 UV Lamp 1 Year*
- C** Warrior 11 UV Lamp 2 Year*
- D** Warrior 15 UV Lamp 1 Year*
- E** Warrior 15 UV Lamp 2 Year*
- F** ER Power Supply*
- G** ST/DT Power Supply*
- H** SI/DI Power Supply*
- I** Self-tapping Screws
- J** Quick Nut (plastic)
- K** Spade Connector
- L** Tap-in Connector
- M** "Z" Mounting Bracket
- N** Sight Glass
- O** Warning Sticker



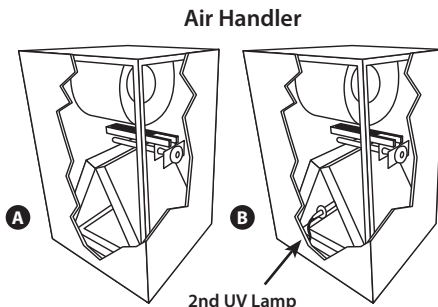
*Note: only one lamp and power supply are included with Warrior.



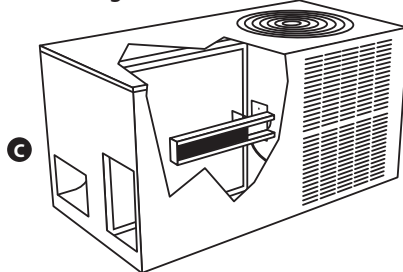
Note: These parts are only included with Warrior Dual.

Typical installations include:

- A** Warrior single in air handler
- B** Warrior dual in air handler
- C** Warrior in Package Unit



Package Unit



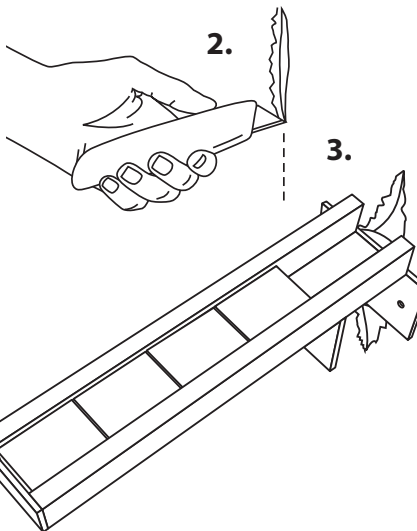
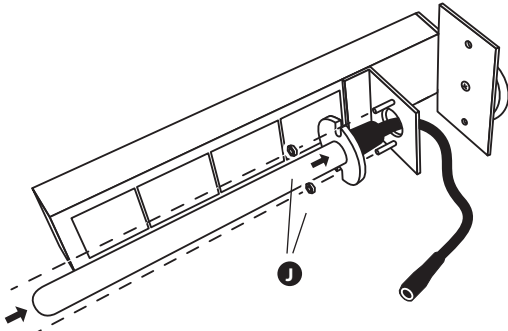
2 Installation Notes

Warrior is usually installed inside the central air handling system. The unit should be oriented so that the air flows past the **UV Light** first then into the **Matrix Element** but a reversed installation is permitted if mounting on the return-side of the coil.

If a second optional UV lamp is used (Warrior Dual) select a location inside the air system that will allow it to shine on the greatest surface area or the area with the most evident microbial growth. To install the secondary UV light use the **Optional 2nd Remote UV Light Installation Instructions** provided with Warrior Dual.

3 Mount Lamp

Mount the **UV Lamp** to the **Warrior** unit as shown using 2 quick nuts **I**.



4 Air Handler Interior Surface Installation

1. Determine the optimal position for placement of **Warrior** inside the air system.
2. Use a utility knife to cut a slit in the insulation on the interior surface.
3. Place the **magnetic mounting bracket** directly on the metal surface or remove the magnet and hard-mount the bracket using the **self-tapping screws** provided. Use foil tape to close the cut in the insulation.

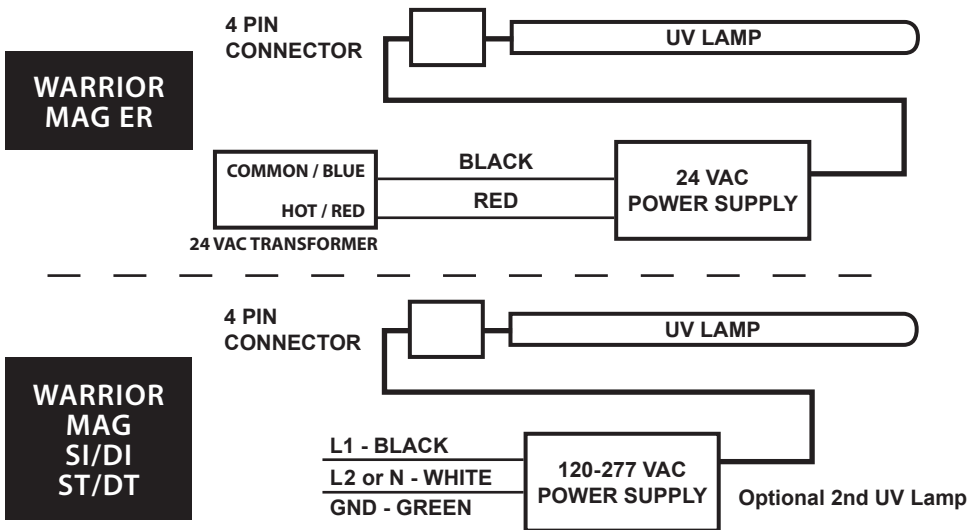
Important! do not install the mounting magnet within 12" of digital signal devices as this may cause interference.

5 Connecting to Power

IMPORTANT

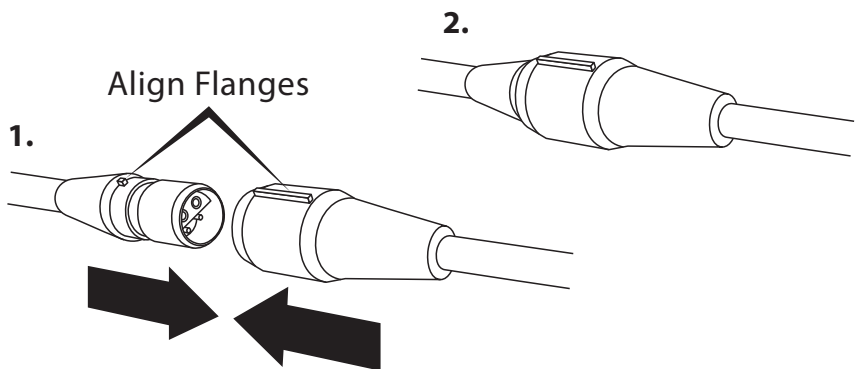
Before connecting to power confirm which Warrior model is being installed. Turn off main power source before installation. Model information is printed on the **Power Unit** cover.

IMPORTANT! Must be wired to constant power - do not connect to blower relay.



6 UV Lamp Connection

Make sure the flanges are aligned and then push the connectors firmly together. A tight connection ensures a proper water-resistant seal.



IMPORTANT!

Systems with high 24 VAC loads may require the installation of a separate 24 VAC transformer to power the UV light.

Always use a separate 24 VAC transformer with "communicating" air systems and all Warrior Dual (WRA-DER) models.

Draws 16 VA, may need to do load calculation: Volts under load X Amps under load.

7 Lamp Replacement

The germicidal UV lamp in Warrior needs to be replaced periodically. TUVL-111P and TUVL115P lamps should be replaced every year. TUVL-211P and TUVL-215P should be replaced every 2 years.

Note: UV lamps will continue to emit visible light but lose germicidal effectiveness over time. You can upgrade to a 2 year lamp with your existing Warrior system.

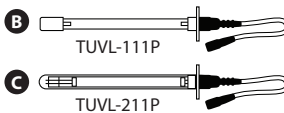


CAUTION!

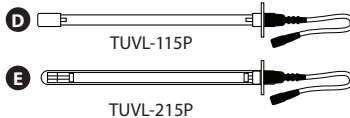
UV lamps contain small amounts of mercury - dispose of lamps in accordance with local environmental regulations. For more information visit www.lamprecycle.org

Note: Use of replacement UV lamps other than the above voids warranty.

Replacement lamps for WRA-MAG11

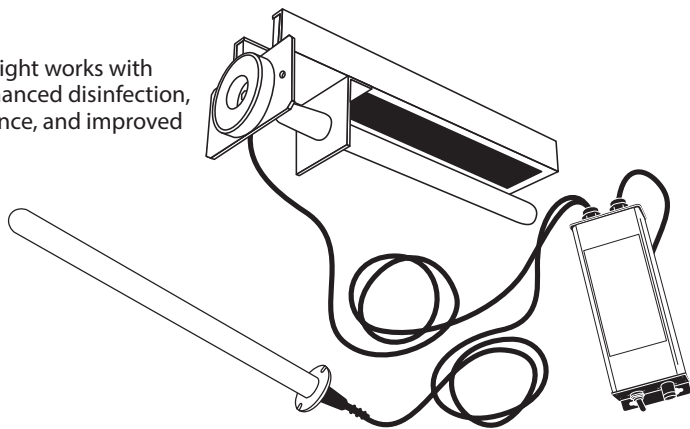


Replacement lamps for WRA-MAG15



Optional 2nd Remote UV Light Installation Instructions

The optional Remote UV Light works with the Warrior system for enhanced disinfection, reduced system maintenance, and improved indoor air quality.



IMPORTANT!

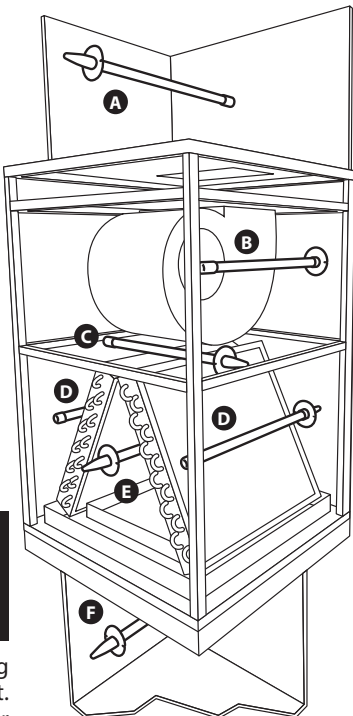
- PCO Dual lamps are wired in series - both must be connected for lamps to light
- Only qualified technicians should install this product
- Install in accordance with relevant building codes
- Read instructions carefully including safety warnings

1 Installation Notes

Before installing the Remote UV Light it is necessary to determine the optimal mounting location inside the air system. First, look for the area with the heaviest mold growth. Also consider a location that will allow the germicidal UV light to shine on the greatest surface area.

Some typical mounting locations:

- A** Supply-side duct
- B** At the blower
- C** Across top of coils
- D** Coil face
- E** Coil "A" plate
- F** Return-side duct



Mounting Options

WARNING

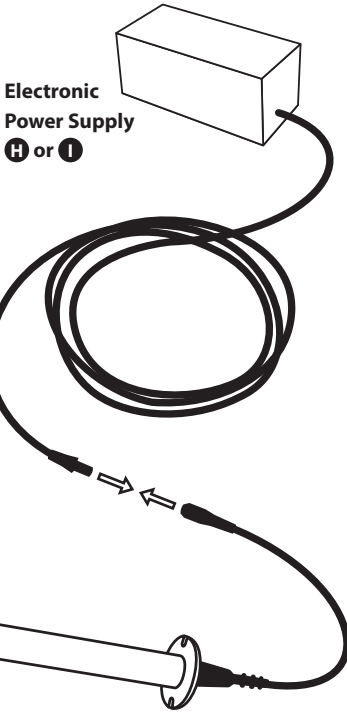
PROTECT EYES FROM UV LIGHT
TURN OFF UNIT OR DISCONNECT
BEFORE SERVICING

Important: some materials inside the air system (including filter media, flex duct, wiring etc.) may not be UV light resistant. Use the optional UV shield (part #TUV-SHIELD-LPC) or cover the materials with reflective tape.

4 Remote UV Light Configuration

IMPORTANT! Only the Warrior Dual model has the electrical capacity and attached cable for the optional Remote UV Light. Simply connect the lamp lead to the power cable on the left side of the Warrior Power Unit.

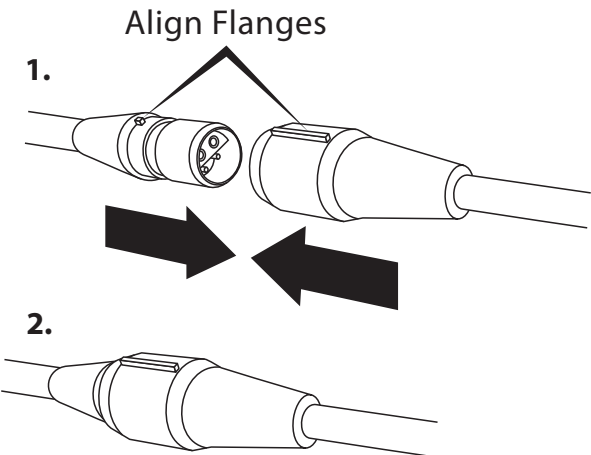
To add a second UV light to an existing Warrior system that is not a Dual model install a separate Warrior UV system.



Optional 2nd
UV Lamp
N O

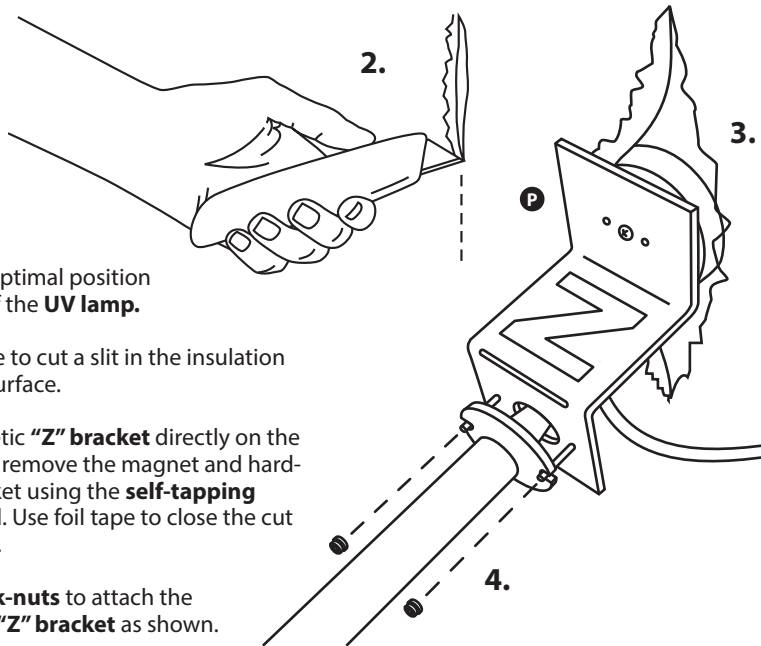
5 Remote UV Lamp Connection

1. When all the other components are properly installed connect the UV Lamp cable to the **PCO** Power supply cable.
2. Make sure the flanges are aligned and then push the connectors firmly together. A tight connection ensures a proper water-resistant seal.



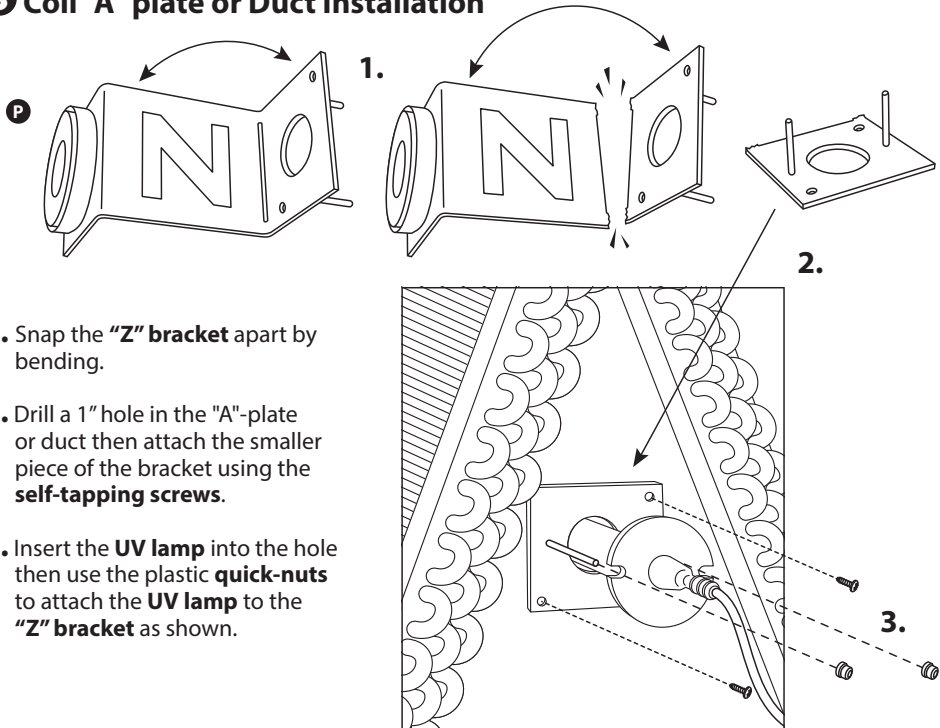
2 Air Handler Interior Surface Installation

1. Determine the optimal position for placement of the **UV lamp**.
2. Use a utility knife to cut a slit in the insulation on the interior surface.
3. Place the magnetic **"Z" bracket** directly on the metal surface or remove the magnet and hard-mount the bracket using the **self-tapping screws** provided. Use foil tape to close the cut in the insulation.
4. Use plastic **quick-nuts** to attach the **UV lamp** to the **"Z" bracket** as shown.



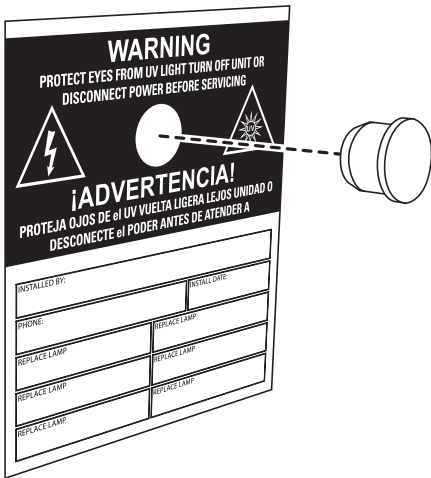
3 Coil "A" plate or Duct Installation

1. Snap the **"Z" bracket** apart by bending.
2. Drill a 1" hole in the "A"-plate or duct then attach the smaller piece of the bracket using the **self-tapping screws**.
3. Insert the **UV lamp** into the hole then use the plastic **quick-nuts** to attach the **UV lamp** to the **"Z" bracket** as shown.



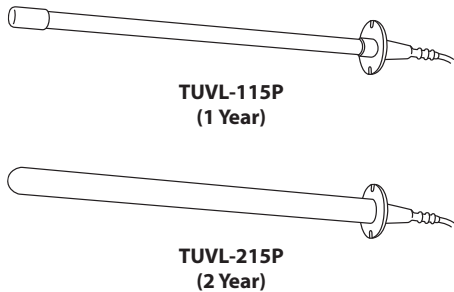
6 Sight Glass Installation

1. Find a suitable location on the outside of the duct-work near the UV Lamp installation and apply the warning/lamp replacement sticker.
2. Drill a 1/2" hole through the orange circle on the sticker. Press the UV safety viewport into hole.
3. Turn on the power and use the sight glass to confirm that the UV Lamp is operating.



7 Lamp Replacement

The germicidal UV lamp in the Remote UV Light needs to be replaced periodically. A TUVL-115P lamp should be replaced every year. The TUVL-215P should be replaced every 2 years. Note: UV lamps will continue to emit visible light but lose germicidal effectiveness over time. You can upgrade to a 2 year with your existing power supply.



CAUTION!

UV lamps contain small amounts of mercury - dispose of lamps in accordance with local environmental regulations. For more information visit www.lamprecycle.org